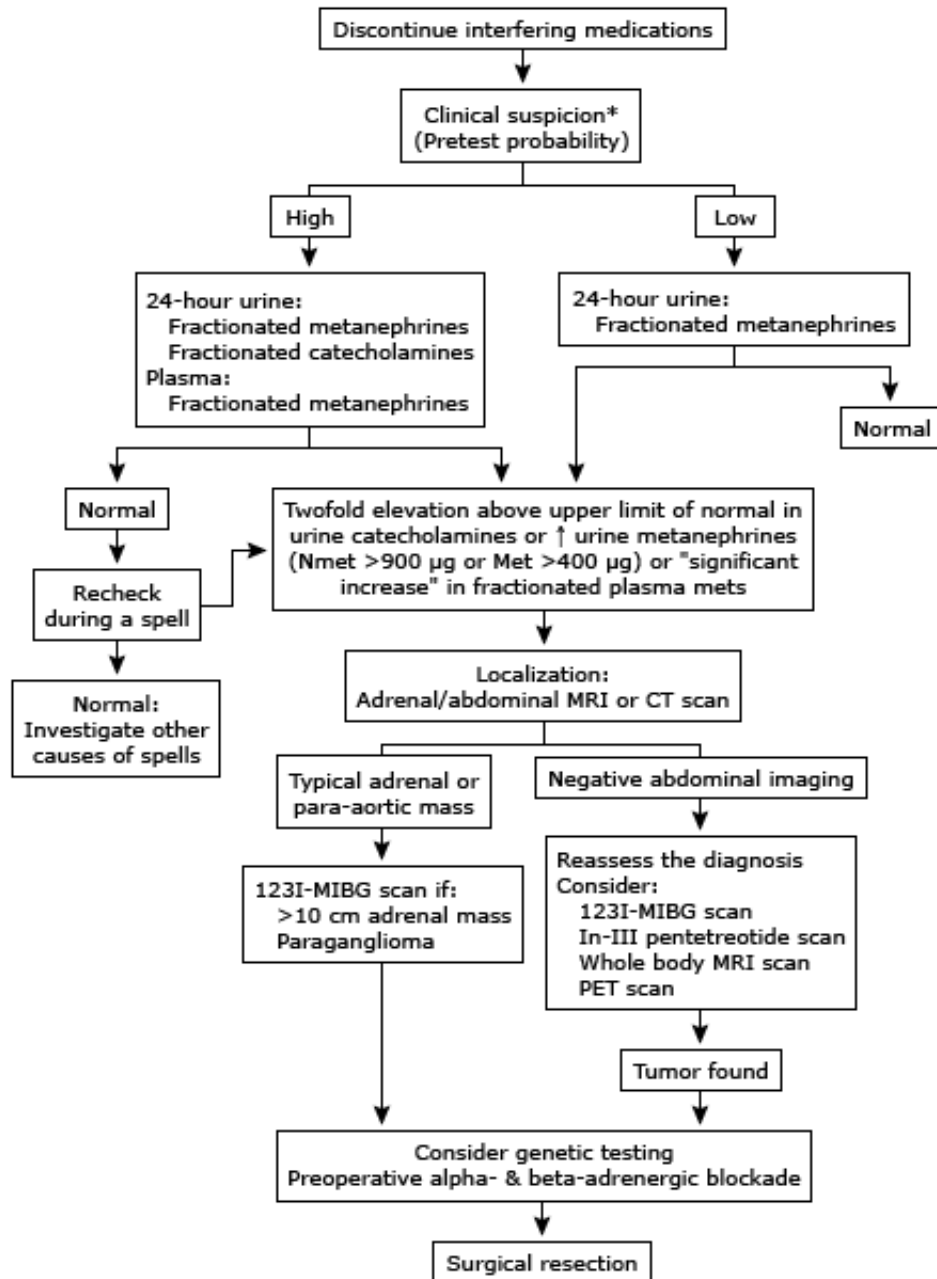


Evaluation and treatment of catecholamine-producing tumors



CT: computed tomography; MRI: magnetic resonance imaging; 123I-MIBG: 123I-meta-iodobenzylguanidine; PET: positron emission tomography.

* Clinical suspicion is triggered by paroxysmal symptoms (especially hypertension); hypertension that is intermittent, unusually labile, or resistant to treatment; family history of pheochromocytoma or associated conditions; or an incidentally discovered adrenal mass.

Modified and reprinted with permission from: Young WF Jr.

Pheochromocytoma: 1926-1993. In: Trends in Endocrinology and Metabolism, vol 4, Elsevier Science, Inc 1993. p 122.

Graphic 81154 Version 3.0